

# NOMAD C Band 23 dBi NE7647-0



This station is designed for signals Receive in C frequency band.

A friendly Man Machine Interface installed on a PC allows its remote monitoring & control via Ethernet link.

**Specifications**

<b>TM Antenna</b>	
<b>Source</b>	Single channel monopulse
<b>Frequency</b>	5090-5250 MHz
<b>Gain</b>	23 dBi typ. @ 5170 MHz
<b>Polarization</b>	RHCP and LHCP
<b>3 dB Beamwidth</b>	~9° @ 5170 MHz
<b>Axial ratio</b>	< 2 dB
<b>Side lobes</b>	< 22 dB
<b>Mechanical specifications</b>	
<b>Elevation range</b>	-5° to +90°
<b>Azimuth range</b>	Unlimited (Continuous rotary joint)
<b>Rotation speed max</b>	≥ 20°/s
<b>Pointing accuracy</b>	± 0.08° (in manual mode)
<b>Total weight</b>	~45 kg
<b>Color</b>	White RAL9003

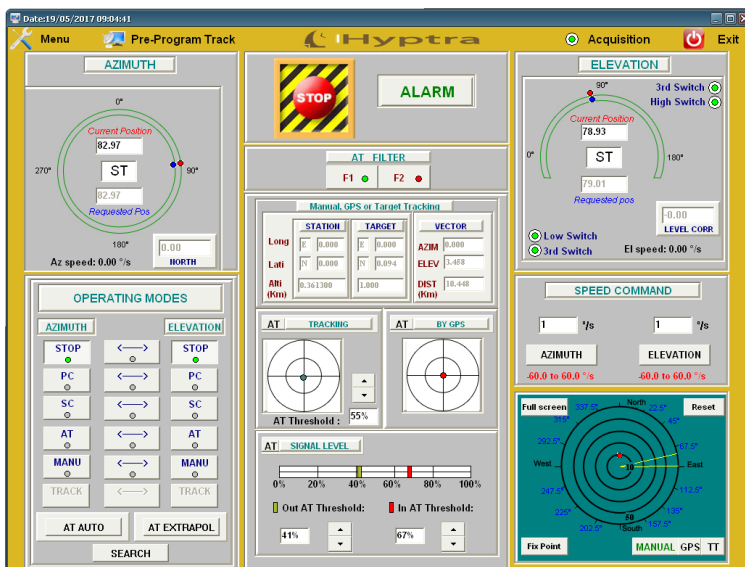
Environnemental specification	
Storage temperature	-30°C to +70°C
Operating temperature	-10°C to +55°C
Rain	Up to 50 mm/hour
Relative humidity	0 to 100% (outdoor)
Wind resistance	80 km/h (ground fixed) 50 km/h (on tripod)
Electrical specification	
Pedestal peak consumption	0.3 kVA, 210-240 VAC, 50Hz

## Options

Other frequency bands on demand  
 Up to 16 bits digital encoder (0.005° pointing accuracy)  
 Rotation speed on demand  
 Inertial measurement unit (North and level)  
 Tracking receiver  
 Embedded GPS

## Antenna control unit (ACU)

The dedicated software, through the color display, provides a user friendly interface (see below non contractual example of ACU screen)  
 The software can easily be customized for user's needs.



## Operating modes

STOP, PC, SC, Manual, GPS, AT, fixed points, Survival, GPS assisted AT

[Link to website](#)

**HYPTRA**

7 Rue de Basly  
 14400 Tailleville

Téléphone : 02 50 30 80 14  
 Email: Hyptra@hyptra.com