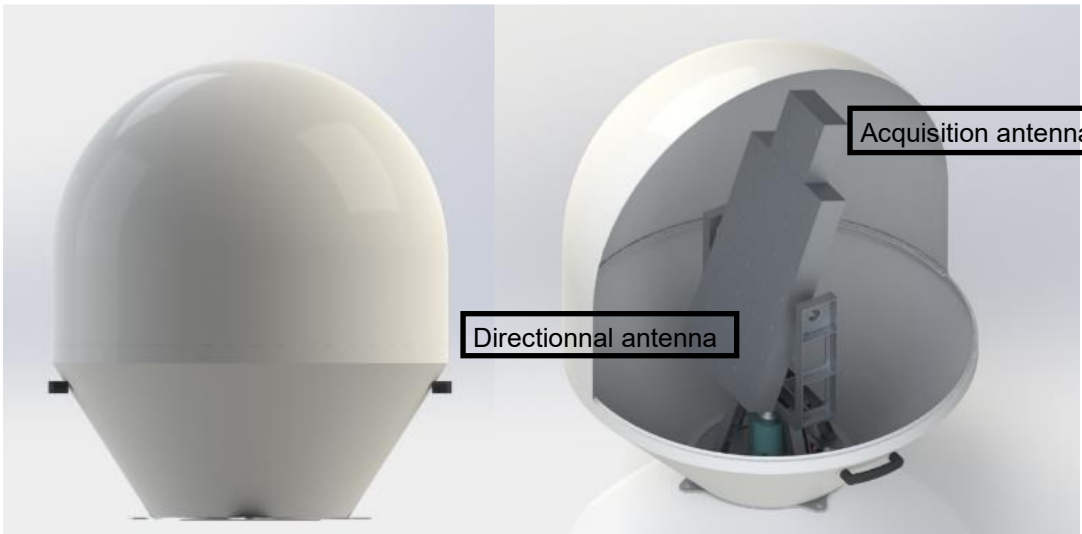


Lyre NOMAD S Band 20 dBi NE7649-0



This station is designed for signals Receive in S frequency band.

A friendly Man Machine Interface installed on a PC allows its remote monitoring & control via Ethernet link.

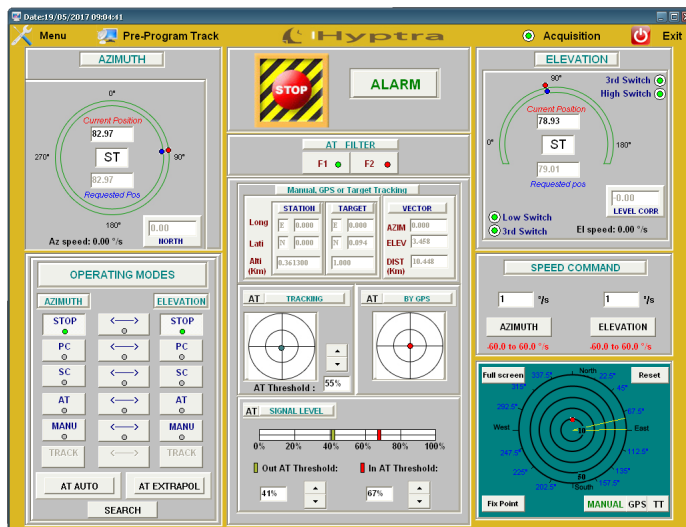
Specifications

RF Specifications	
Antenna Type	Array antenna
Frequency	2200-2400 MHz
Gains	20 dBi typ. @ 2300 MHz (Directionnal antenna) 12 dBi typ. @ 2300 MHz (Acquisition antenna)
LNA	+50 dB, NF <0.5dB
Polarization	RHCP & LHCP
3 dB Beamwidth	< 16° Az/EI @ 2300 MHz (Directionnal antenna) < 50° Az/EI @ 2300 MHz (Acquisition antenna)
Side lobes	> -15 dB
Mechanical specifications	
Elevation range	-10° to +90°
Azimuth range	Unlimited
max. rotation speed max. acceleration	≥ 30°/s ≥ 60°/s ²
Pointing accuracy	± 0.08°
Weight (With radome)	<45 kg
Dimensions	Diameter: 0.9m Height: 1.1m
Fixation	4 screws on 480mm diameter

Environnemental specifications	
Storage temperature	-35°C to +70°C
Operating temperature	-10°C to +55°C (outdoor)
Rain	Up to 150 mm/h
Relative humidity	0 to 100% (outdoor)
Wind resistance	100 km/h
Protection	IP63
Electrical specifications	
Pedestal peak consumption	0.6 kVA, 210-240 VAC, 50Hz

Antenna control unit (ACU)

The dedicated software, through the color display, provides a user friendly interface (see below non contractual example of ACU screen)
 The software can easily be customized for user's needs.



Operating modes

STOP, PC, SC, Manual, GPS, AT, fixed points, Survival, GPS assisted AT

[Link to website](#)

HYPTRA

7 Rue de Basly
 14400 Tailleville

Téléphone : 02 50 30 80 14
 Email: Hyptra@hyptra.com