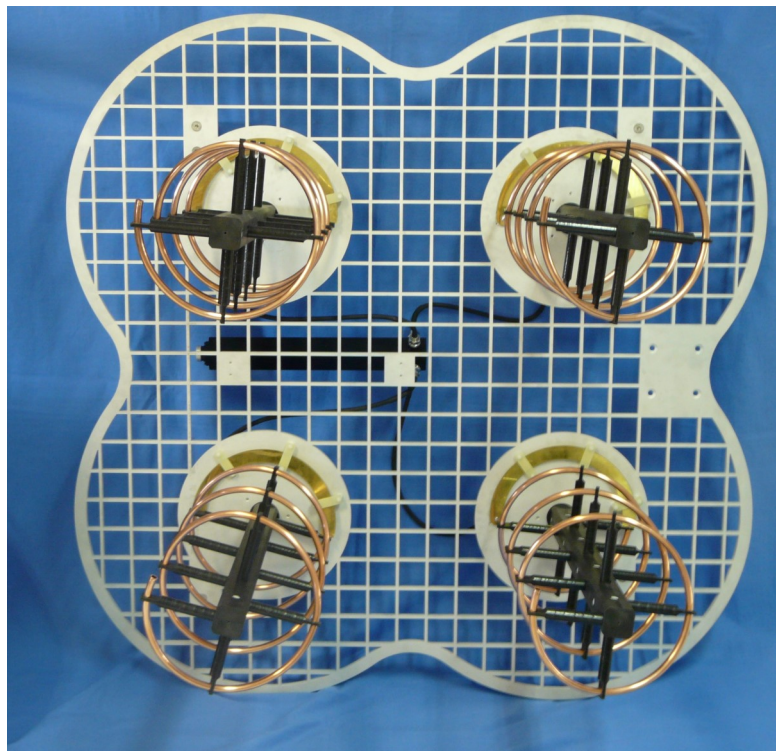


NE0130-X

4 Helix 370-450 MHz

LHCP or RHCP



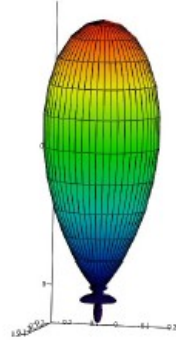
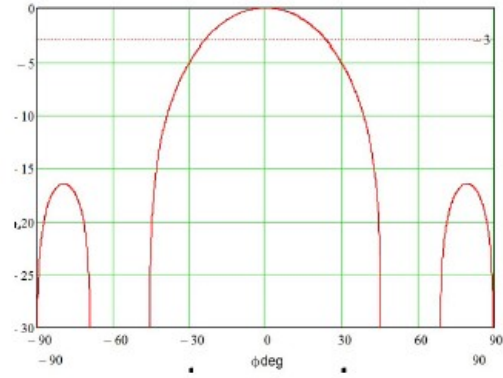
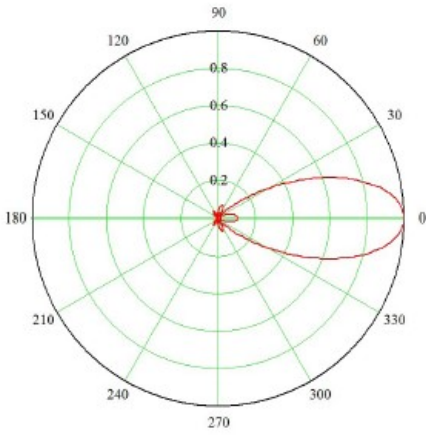
References:

NE0130-0: LHCP
NE0130-A: RHCP

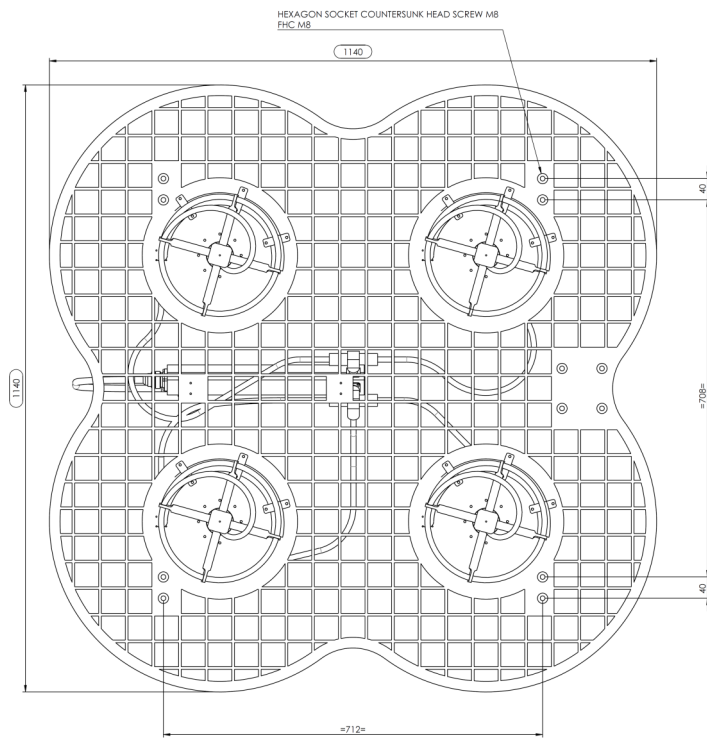
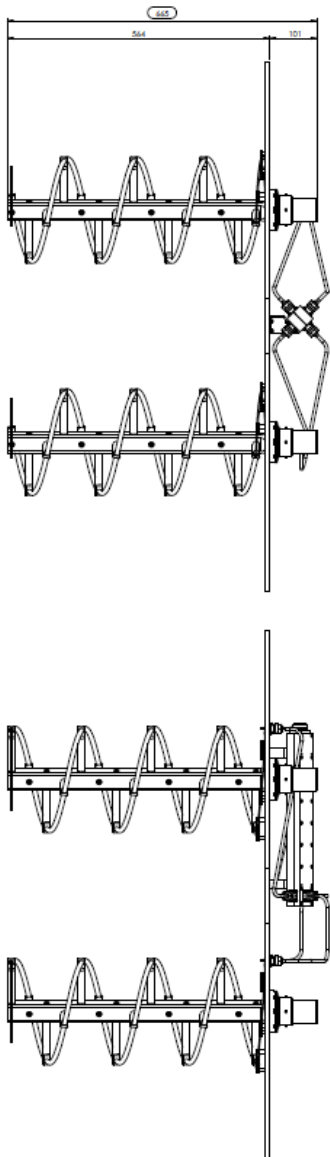
Specifications

RF Specifications	
Frequency	370-450 MHz
Rated power	1000W CW
Gain	13 dBi typ.
Polarization	LHCP or RHCP
Radiation pattern	>30° @ -3dB in Azimuth >30° @ -3dB in Elevation
Input impedance	50 Ohms
VSWR	< 1.5:1
Mechanical & Enviromental specifications	
Dimensions	Length 665mm, Reflector Ø1400mm
Weight	<30kg without radome <45kg with radome
Fixation	8 screws TFHC M8 (see Mechanical drawing)
Connector	7-16 femelle
Temperature	-25°C à +55°C
Wind	<90km/h

Radiation patterns



Mechanical drawing



HYPTRA

7 Route de Basly
14400 Tailleville

Téléphone : 02 50 30 80 14
Email: Hyptra@hyptra.com